



CITY OF WATER RESIDENCES

Trendy South Facing Apartments

An aerial architectural rendering of a coastal residential development. The scene features a large body of blue water with a bridge spanning across it. On the left, a tall, slender skyscraper with a green and yellow facade stands out. The central area is densely packed with various types of buildings, including high-rise apartments, commercial structures with curved roofs, and a large circular building. A prominent purple-colored residential complex is located in the lower-left foreground. The area is interspersed with green spaces, palm trees, and parking lots. Several boats are visible in the water, and a small sailboat is in the bottom left. The overall atmosphere is one of a modern, waterfront urban community.

City of Water Residences

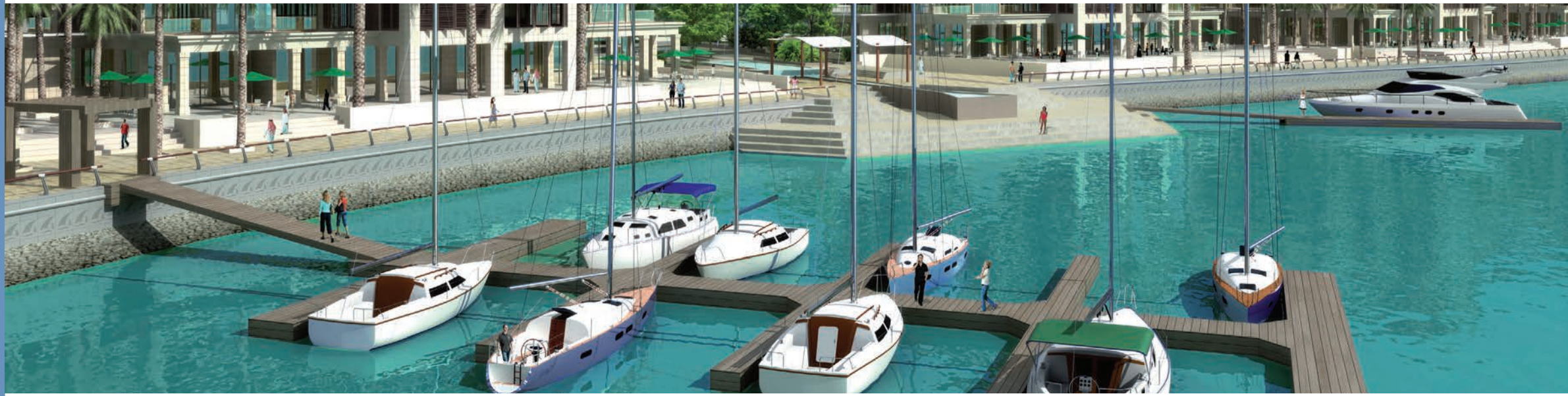


Embrace Life the Way it Should be Lived

Enjoying a strategic location on Manama's northern shore, minutes away from the western Seef district amid the Diplomatic Area and Ministries, Reef Island offers its residents and visitors the soothing tranquility of a tropical island getaway combined with easy access to a vibrant, cosmopolitan city.

From its beginnings, Reef Island was conceived to be a pioneer in luxury living, serenity and relaxation, setting new prestigious standards. On this purpose-built atoll, state-of-the-art amenities and world-class architecture unite in an exclusive lifestyle experience. Here, discerning clientele can immerse themselves in tranquil splendor and embrace life the way it should be lived.







CONTENTS

City of Water Residences - Introduction	2
Promenade – Take in the Sights	4
City of Water Residences – A World of Choice	6
1 Bedroom A (102 sq.m)	7
1 Bedroom B (82 sq.m)	8
2 Bedrooms A (180 sq.m)	9
2 Bedrooms B (180 sq.m)	10
3 Bedrooms A (285 sq.m)	11
3 Bedrooms B (236 sq.m)	12
3 Bedrooms C (222 sq.m)	13
3 Bedrooms D (323 sq.m)	14
Duplex 4 Bedrooms 5th Floor (344 sq.m)	15
Duplex 4 Bedrooms 6th Floor (344 sq.m)	16
Penthouse (510 sq.m)	17
City of Water Residences Distribution	18

Trendy South Facing Apartments



City of Water Residences

City of Water Residences – Introduction

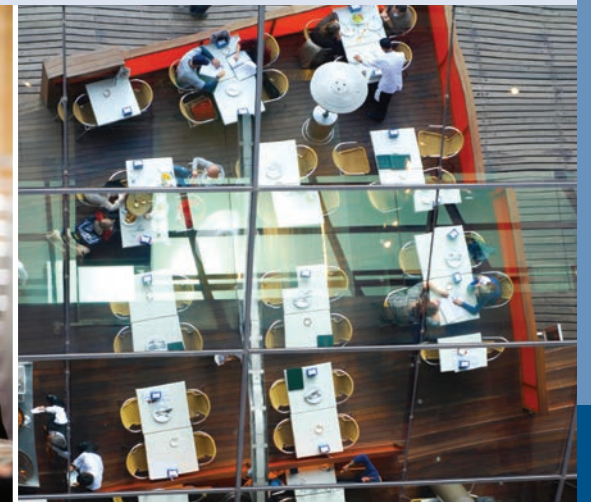
Beyond their hint of Far Eastern allure blended with contemporary cosmopolitan chic, Reef Island's City of Water Residences incorporate eclectic designs that cater to the diverse tastes of modern-day sophisticates. With their south-facing aspect, located along a lush ribbon of parkway overlooking the sea and the capital, the apartments are ideally placed amid enticing leisure options. From this enviable location, you are as close as you can be to the café life. Residents can choose to relax with friends and take an espresso at one of the many sidewalk bistros or stroll along the waterfront to soak up the sights and sounds of the beating heart of Reef Island.





Promenade Take in the Site

Replete with beautifully crafted stainless steel balustrades and offering an enviable sea view, the City of Water Promenade at Reef Island provides the perfect setting for a leisurely stroll along the coast whatever the time of day.





City of Water Residences

A World of Choice

City of Water Residences at Reef Island compromise eight buildings with distinct interior and exterior architectural styles from which residents can choose a home. The diverse selection includes 1-, 2-, 3-, 4- bedroom apartments and Penthouses tastefully appointed and ranging in size from 82m2 to 510m2.

Maintenance free exterior with full granite façade, combined with aluminum, sun breakers and tinted double glazed windows. The main entrance rivals with the most luxurious five star reception halls. Fully tiled with either Italian Cream Marphil or Calacatta first quality marble, it features an American walnut impressive desk behind which a round the clock concierge is delighted to serve the most demanding owners.



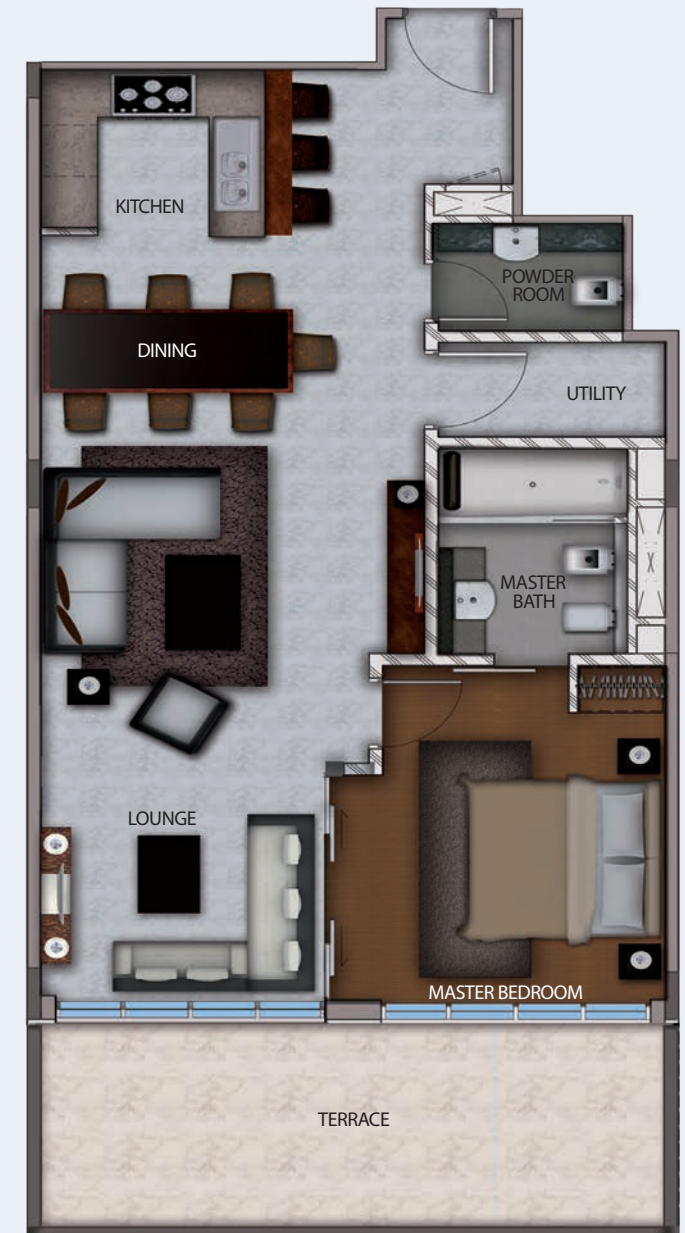
1 BEDROOM WITH TERRACE

A (102 sq.m)

1st Floor Plan



1 Bedroom Plan



DESCRIPTION

Bedroom	1
Area	102 sq.m
Floor No.	1st

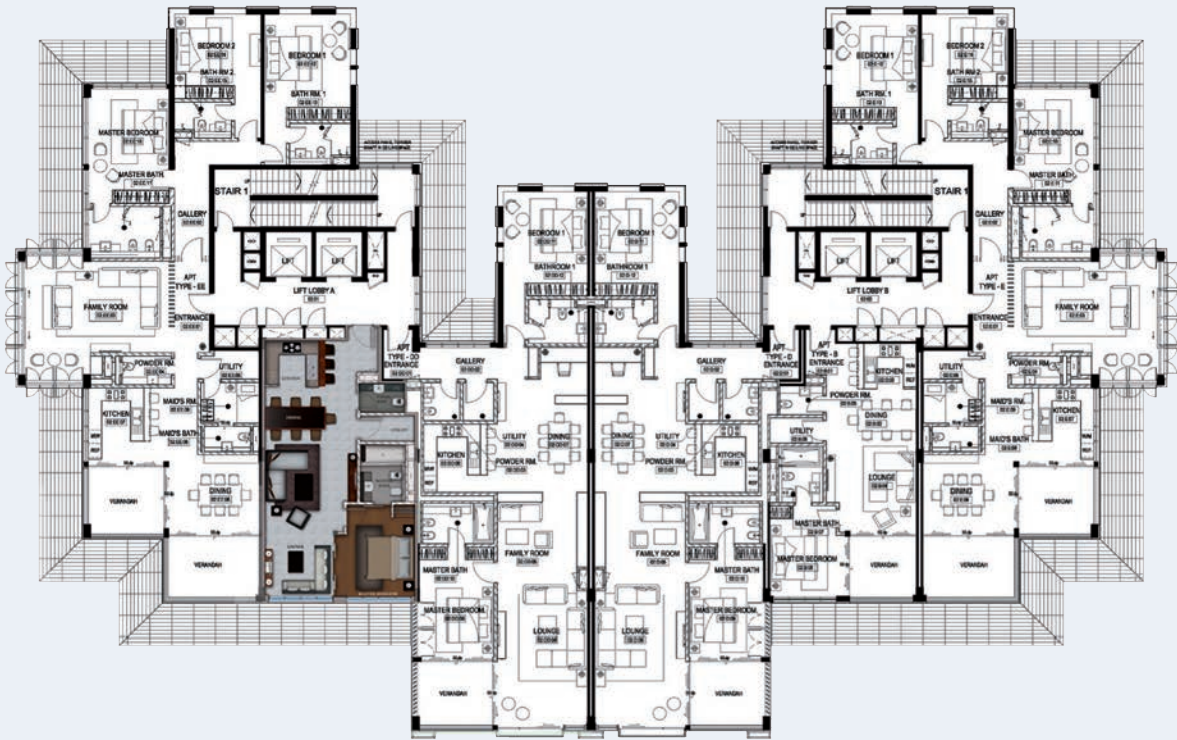
1 BEDROOM

B (82 sq.m)

1 Bedroom Plan



2nd - 5th Floor Plan



DESCRIPTION	
Bedroom	1
Area	82 sq.m
Floor No.	2nd - 5th

2 BEDROOMS

A (180 sq.m)

1st Floor Plan



2 Bedrooms Plan



DESCRIPTION

Bedroom	2
Area	180 sq.m
Floor No.	1st

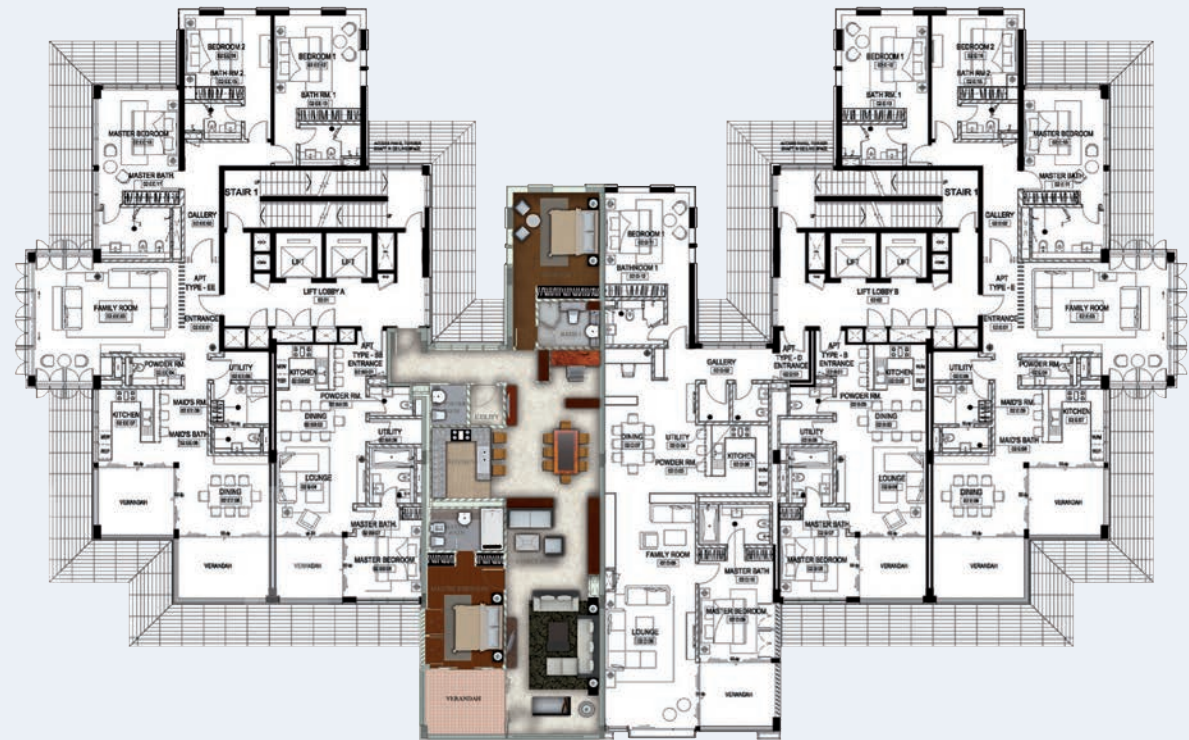
2 BEDROOMS

B (180 sq.m)

2 Bedrooms Plan



2nd - 4th Floor Plan



DESCRIPTION

Bedroom

2

Area

180 sq.m

Floor No.

2nd - 4th

3 BEDROOMS A (285 sq.m)

1st Floor Plan



3 Bedrooms A Plan



DESCRIPTION

Bedroom	3
Area	285 sq.m
Floor No.	1st

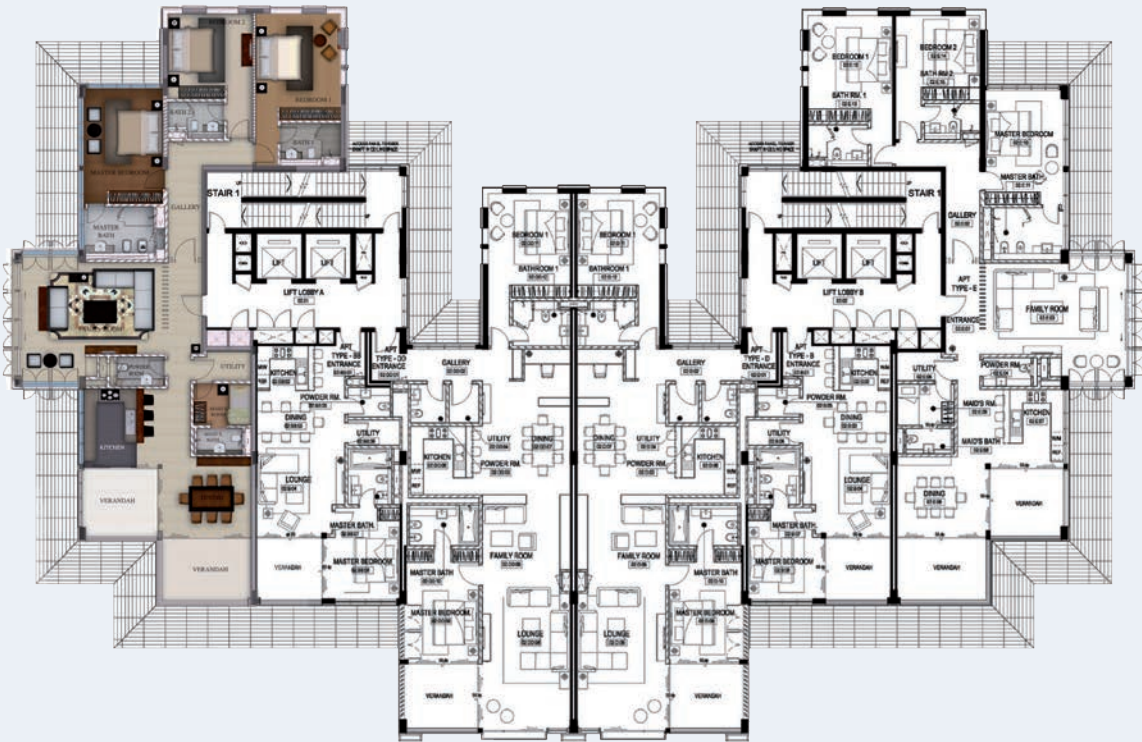
3 BEDROOMS

B (236 sq.m)

3 Bedrooms B Plan



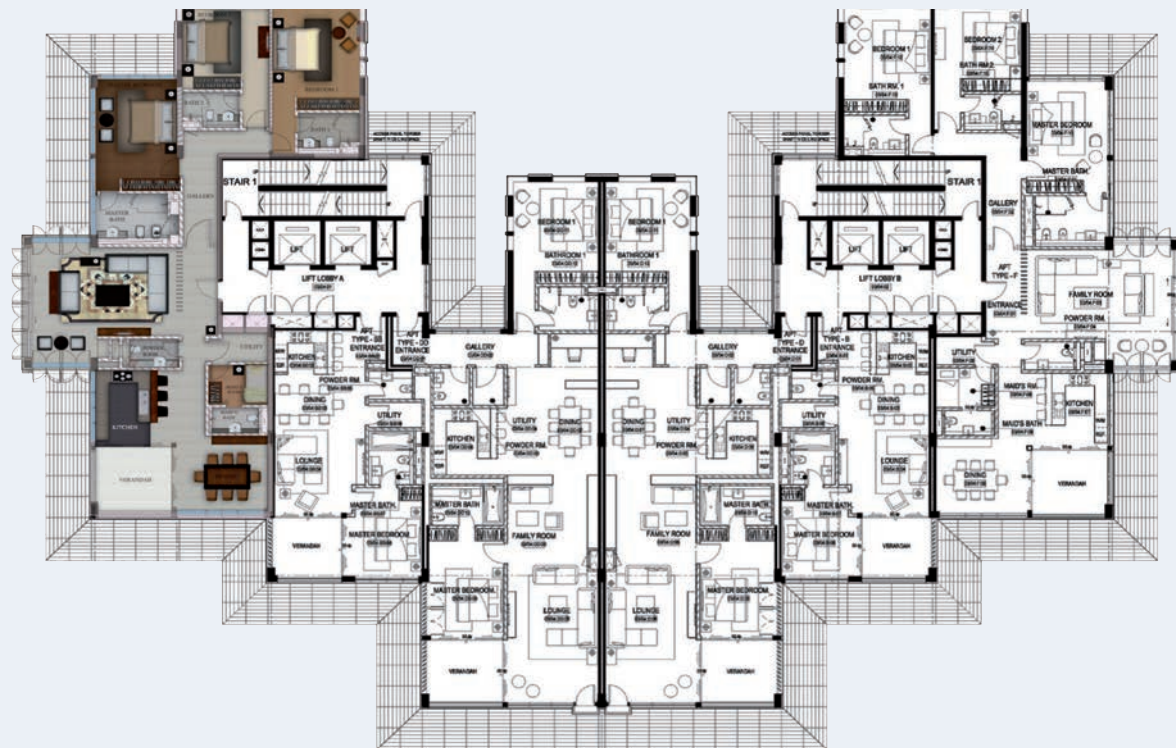
2nd Floor Plan



DESCRIPTION	
Bedroom	3
Area	236 sq.m
Floor No.	2nd

3 BEDROOMS C (222 sq.m)

3rd - 5th Floor Plan



3 Bedrooms C Plan



DESCRIPTION

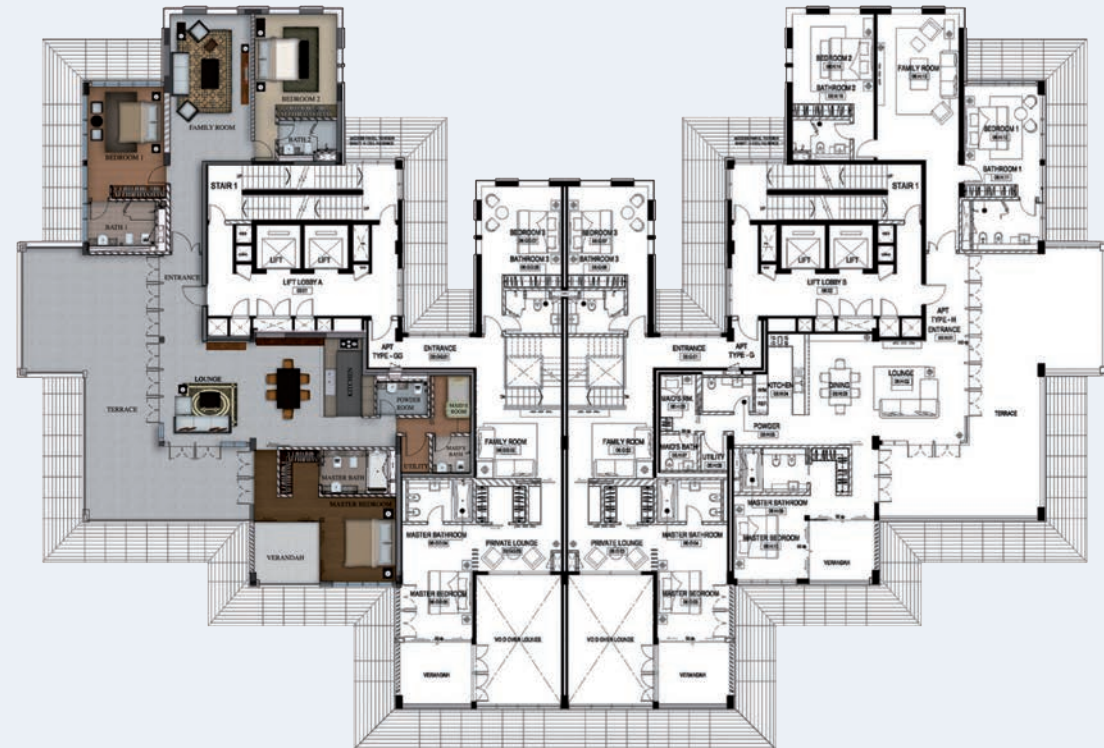
Bedroom	3
Area	222 sq.m
Floor No.	3rd - 5th

3 BEDROOMS D (323 sq.m)

3 Bedrooms D Plan



6th Floor Plan



DESCRIPTION

Bedroom

3

Area

323 sq.m

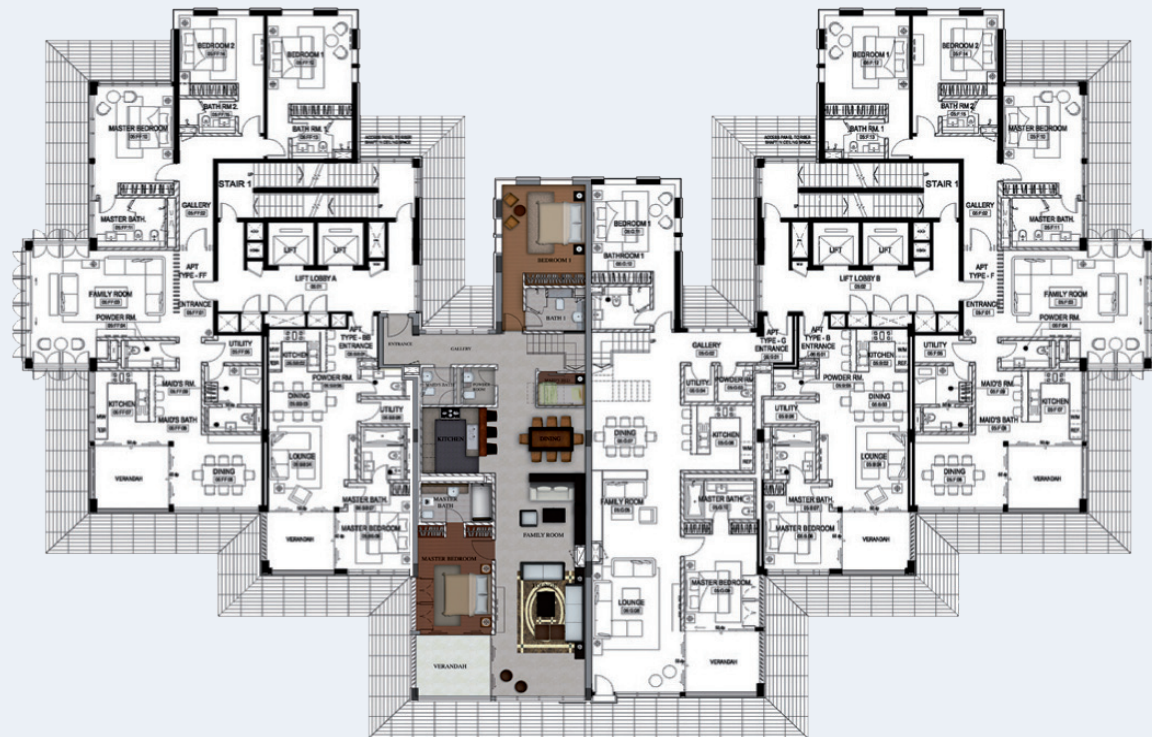
Floor No.

6th

DUPLEX

4 Bedrooms 5th Floor (344 sq.m)

5th Floor Plan



Duplex 4 Bedrooms 5th Floor Plan



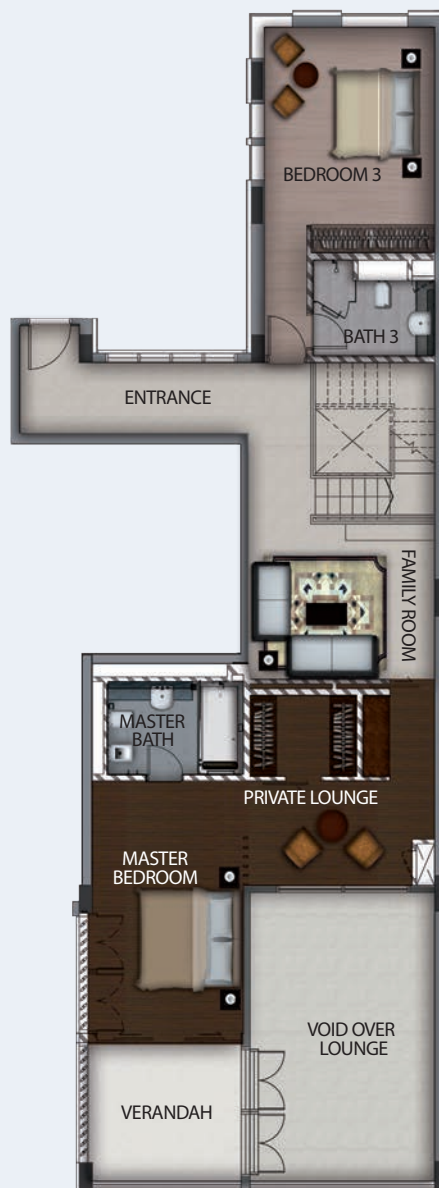
DESCRIPTION

Bedroom	4
Area	344 sq.m
Floor No.	5th

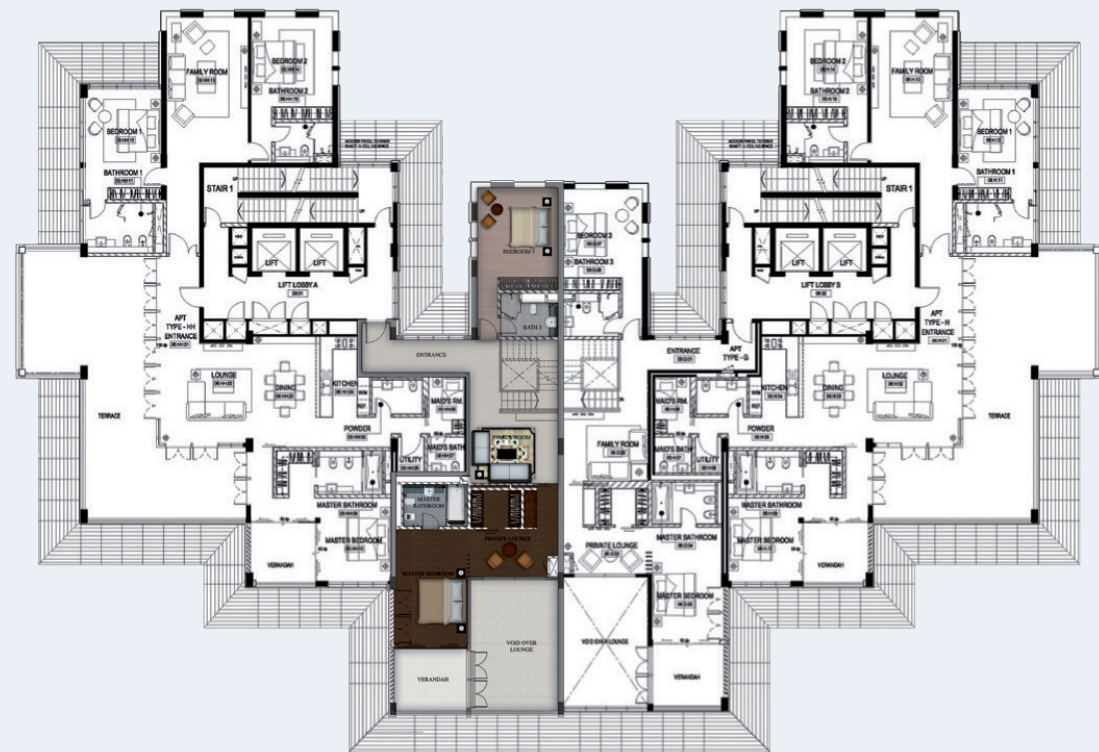
DUPLEX

4 Bedrooms 6th Floor (344 sq.m)

Duplex 4 Bedrooms 6th Floor Plan



6th Floor Plan



DESCRIPTION

Bedroom

4

Area

344 sq.m

Floor No.

6th

PENTHOUSE

4 Bedrooms (510 sq.m)

7th Floor Plan



Penthouse Plan



DESCRIPTION

Bedroom	4
Area	510 sq.m
Floor No.	7th



City of Water Residences Distribution

7th Floor

6th Floor

5th Floor

4th Floor

3rd Floor

2nd Floor

1st Floor

Penthouse 4 BDR					
3 BDR ****		4 BDR	4 BDR	3 BDR ****	
3 BDR ***	1 BDR **			1 BDR **	3 BDR ***
3 BDR **	1 BDR **	2 BDR **	2 BDR **	1 BDR **	3 BDR **
3 BDR **	1 BDR **	2 BDR **	2 BDR **	1 BDR **	3 BDR **
3 BDR **	1 BDR **	2 BDR **	2 BDR **	1 BDR **	3 BDR **
3 BDR *	1 BDR *	2 BDR *	2 BDR *	1 BDR *	3 BDR *

KEY	
1 BDR	Type A*
	Type B**
2 BDR	Type A*
	Type B**
3 BDR	Type A*
	Type B**
	Type C***
	Type D****
4 BDR Duplex	1 Type
Penthouse	1 Type





City of Water Residences

Where Luxury Meets Perfection



Reef Island, Marketing Suite, P.O. Box 31405 Kingdom of Bahrain / Tel: +973 17 562 810 / Fax: +973 17 562 811

www.reef-island.com